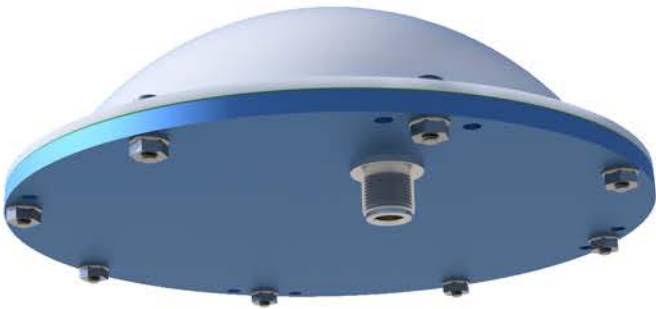


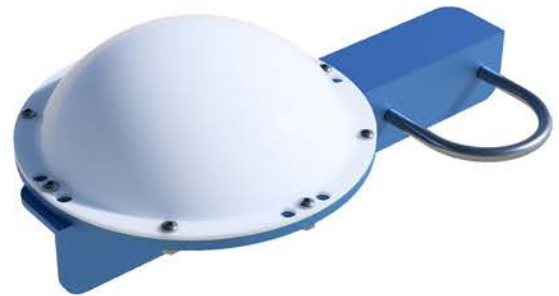
D-Dot Sensor

ELECTRIC FIELD SENSOR



SPECIFICATIONS

MODEL	SR-DDT-105-GP-04
SENSITIVITY	105.5 kV/m/ μ s/V
OUTPUT	Single-Ended
CONNECTOR	Female N-Type
BANDWIDTH	> 25 MHz
MOUNTING	Horizontal, Pole, Custom
SENSING ELEMENT	353 Brass
INSULATOR	PVC
CONSTRUCTION	Anodized Aluminum, 6061
PROTECTIVE DOME	Acrylic



▲ Example Mounting Configuration



1417 Chaffee Drive, Suite 4, Titusville, FL 32780
+1 321-607-6382 www.sls-us.com